

OPTIONS

3 JAW SELF CENTERING SCROLL CHUCK



High quality cast iron body with precision machined guideways and bearing surfaces, drop forged case hardened scroll plate and hardened and ground pinions. 1 set of hardened reversible two piece jaws, 1 self-ejecting wrench, 1 set of mounting screws, 2 Allen keys and mounting plate provided.

3 JAW SELF CENTERING GRIPPER CHUCK



The Gripper is a cam operated assembly designed specifically for the welding industry. The gripper incorporates many features that make it especially suitable for the welding environment. These features include single point cam operation of the jaws and adjustable quick-change reversible jaws that can be positioned for small and large diameter work pieces. Heavy-duty construction and a completely enclosed faceplate prevents flux and weld splatter from impairing the operation of the gripper.



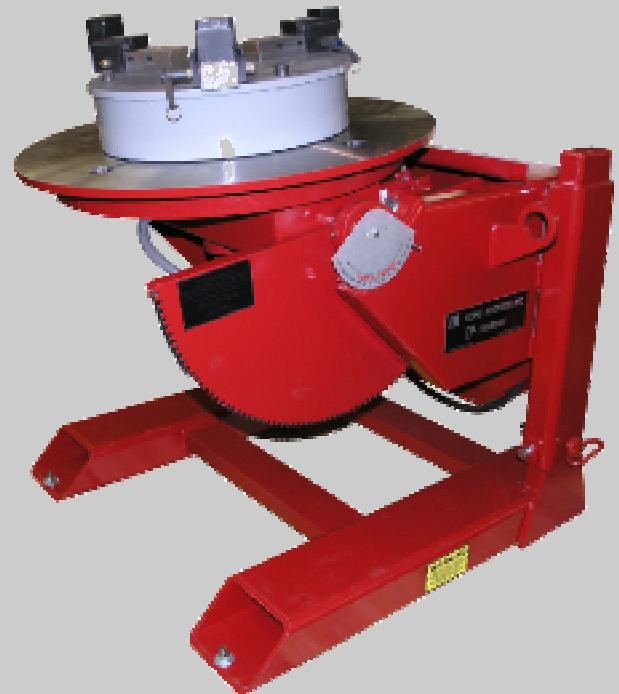
KOIKE ARONSON, INC. / RANSOME

P.O. Box 307, Arcade, New York 14009
Phone (585) 492-2400 Fax (585) 457-3517
www.koike.com



Features

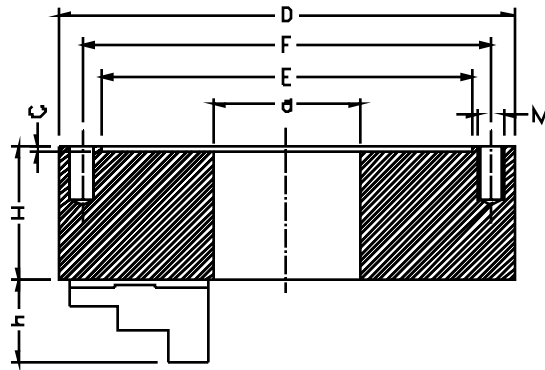
- ◆ Self Centering
- ◆ Heavy Duty Three Jaw Construction
- ◆ Single Handed Operation
- ◆ Removable & Reversible Jaws
- ◆ Low Maintenance Cost
- ◆ Long Jaw Bites for Stability & Safety
- ◆ Serrated Jaws (Scroll Type Only)



Specifications

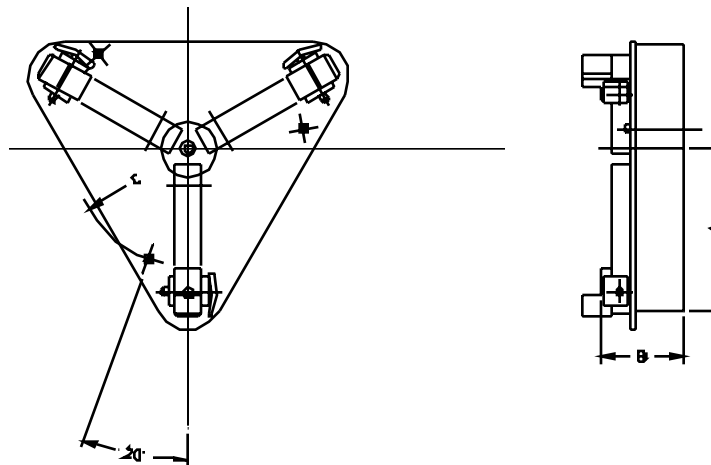


SCROLL TYPE



Size	Inside Clamp Range	Outside Clamp Range	D	F	E	d	C	H	h	Thread M	Weight Lbs.	Mount Plate/Lbs
3JC6	1.65-5.75	.12-6.30	6-1/4"	5.511"	4.921"	1.653"	.1575"	2.539"	1.693"	M10 (3)	22	.75x8 Dia 11 Lbs.
3JC12	2.56-10.43	.39-12.40	12-1/2"	11.26"	10.24"	4.055"	.1969"	3.701"	2.244"	M16 (6)	121	1"X14.38 Dia / 28 Lbs.
3JC25	5.51-23.23	1.18-24.80	25"	13.00"	16.03"	9.92"	1.18"	5.905"	3.42"	3/4-10 (6)	630	1"X28 Dia / 175 Lbs.

GRIPPER TYPE



Model	Clamp Range inches	Inside Clamp Range inches	Outside Clamp Range inches	Load Capacity Lbs.	Weight Lbs.	Dimensions		
						A	B	C
33	1.38-33.75	5.38-33.75	1.38-30.25	3000	228	18"	7"	19-5/16"
44	1.38-44	5.38-44	1.38-40.5	3000	305	23-1/2"	7"	19-5/16"
63	2.13-63.88	6.63-63.88	2.13-60.13	7500	722	34-13/16"	8-1/8"	26-3/4"



KOIKE ARONSON, INC. / RANSOME

Main Office:
P.O. Box 307, Arcade, New York 14009
Phone (585) 492-2400 Fax (585) 457-3517

Houston Sales Office:
1285 N. Post Oak, Suite 150
Houston, TX 77055
Phone (713) 682-9645 Fax (713) 957-4852

Visit us at www.koike.com